

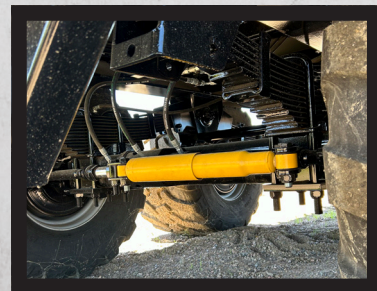


SHE'LL LOOK MIGHTY PRETTY IN THE FIELD

Keep the picture, it'll last longer. Or better yet, get yourself one and you can stare at all you want.



MANUAL LIFT GRAIN DOOR



STEERABLE AXLES



HYDRAULIC LIFT REAR TAILGATE



FRONT FOLD DOWN PANEL

SED1200

LENGTH 24'
WIDTH 8'
HEIGHT 5'
CAPACITY 960 CU. FT.
HORSEPOWER 200



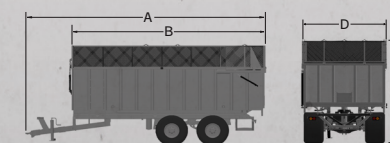
SPECIALITY FEATURES



STANDARD COLOR OPTIONS



Custom colors available upon request



Model	SED1200		
A - Overall Length	366"	Capacity	
B - Inside Box Length	288"	Cubic Feet	960
C - Overall Height	124"	Cubic Yards	35
D - Overall Width	127"	Box Construction - Thickness	10 Ga
Loading Height	124"		

FEATURES

- 3/8" THICK TUBE CONSTRUCTION ON REACH
- 3/16" THICK STEEL FLOOR
- TIRE SIZE: 750
- WALL TO FLOOR SHEDDERS
- 5 STAGE SINGLE ACTING TELESCOPIC CYLINDER
- LOCK-OUT STANDS ON BOTH SIDES
- 30 TON UNDERCARRIAGE (TANDEM)
- UNDERCARRIAGE COMES STANDARD WITH HYDRAULIC BRAKES
- UNDERCARRIAGE EQUIPPED WITH SELF-STEER TECHNOLOGY
- AIR OR HYDRAULIC BRAKES
- 15 TON PER AXEL RATING (30,000 LBS)

